



KGS Store



KGS Store

Version 3.46

Installation and Configuration Manual

Last Update: May 2017

© 2017 KGS Software GmbH

Table of Contents

1.	Installation	3
1.1	Software components	3
1.1.1	KGSStore base components	3
1.1.2	Additional files for EMC Centera	3
1.1.3	Additional files for DELL DX	3
1.1.4	Additional files for database support	3
1.2	Installation for SAP ArchiveLink 4.5	3
1.2.1	Using Tomcat WEB Server	4
1.2.2	Using JIGSAW WEB Server	4
1.2.2.1	Adapting file JSL.INI (Windows platforms only)	4
1.3	Configuring the KGSStore	4
1.3.1	Configuration file (default: Storage-conf.txt)	5
2.	Storage type	16
2.1	File system	16
2.2	Centera	20
2.2.1	Without Database	20
2.2.1.1	Document-CLIP	20
2.2.1.1.1	Datafile	20
2.2.1.1.2	CDF File	20
2.2.1.1.3	Component-CLIP	22
2.2.1.1.4	Datafile	22
2.2.1.1.5	CDF File	22
2.2.2	With Database	23
2.2.3	Additional functionality	23
2.3	ILM without Database	23
2.4	ILM with Database	23
2.5	NetApp	24
2.6	Filesystem with DB	24
2.6.1	Database	24
2.7	HPICas	26
2.7.1	ArchiveLink	26
2.7.2	ILM	26
2.8	Oracle UCM	27
2.8.1	Install Oracle API	27

2.8.2	Enable IDC Service for 11g	27
2.8.3	Enable DBSearchContainsOpSupport	29
2.8.4	Install KGS Service	32
2.8.5	Create Oracle ArchiveLink Keys.....	35
2.8.5.1	Oracle ArchiveLink Key Description.....	38
2.9	DELL DX.....	40
2.9.1	2.9.1Documents	40
2.9.2	Components	40
3.	Add-on functionality	41
3.1	Requesting a Centera CLIP-ID for a given Document.....	41

1. Installation

1.1 Software components

1.1.1 KGSSStore base components

The KGSSStore consists of the following components:

KGSSStore.jar
KGSTool.jar
SAPALink.class

1.1.2 Additional files for EMC Centera

In addition to the KGSSStore base modules, the following components are needed for connection to an EMC Centera Storage System.

Centera API:

FPLibrary.jar
PAI_module.dll
FPLibrary.dll
FPParser.dll

1.1.3 Additional files for DELL DX

In addition to the KGSSStore base modules, the following components are needed for connection to a DELL DX Storage System.

DX API:

CASorSDK.jar
commons-codec-1.3.jar
commons-httpclient-3.0.1.jar
commons-logging-1.1.jar
jmdns-2.1.jar
log4j-1.2.14.jar

1.1.4 Additional files for database support

For using database supported filesystem based filing, you have to install the JDBC driver for your database product. Please ask your database team for further details.

1.2 Installation for SAP ArchiveLink 4.5

Please keep in mind that the KGS ContentServer is independent of the Storage/DMS System. If you want to connect a product which needs additional JAR files, please install the files in the WEB-Server environment.

1.2.1 Using Tomcat WEB Server

Please install the product according to the install instruction of the product
Copy all JAR files and libraries to subfolder ../tomcat x-x/shared/lib, All class files to ../tomcat x-x/shared/classes.

1.2.2 Using JIGSAW WEB Server

Please install the product according to the install instruction of the product.
Copy all JAR and class files to the sub directory ../Jigsaw/classes. All libraries to directory /jigsaw/exec

1.2.2.1 Adapting file JSL.INI (Windows platforms only)

Please configure the classpath in the JSL.ini file. The parameter <param01> (section [Java]) contains the Java classpath which the content server uses. Enter the location of the JAR containers KGSStore.jar and FPLibrary.jar here (see example). The file JSL.ini is in folder *InstalldirectoryCS/Jigsaw/Exec*

Example:

[java]

..

..

param01

Jigsaw;.. \classes;.. \classes\servlet.jar;.. \classes\jigsaw.jar;..c:\Programme\KGS\KGSStore\classes\KGSStore.jar; C:\Programme\KGS\KGSStore\classes\FPLibrary.jar;..

1.3 Configuring the KGSStore

First, you define the place of the configuration file as follows:

For Windows this is specified in the Registry under the following key
KEY_LOCAL_MACHINE\SOFTWARE\JavaSoft\Prefs\kgs\store\profile

For UNIX this information is saved in a XML file. This is in the directory /etc/.java/.systemPrefs

If a filename is configured without an absolute path, the given filename is used at the current working directory of the started application.

The default filename is Storage-conf.txt

If you are using Tomcat as the WEB-Server platform you can specify the location of the configuration file in the WEB.XML file of your WEBAPP.

Sample:

<env-entry>

 <env-entry-name>KGSStore-Profile</env-entry-name>

```

    <env-entry-value>C:\\Apache\\Tomcat 6.0\\conf\\storage-config.txt</env-entry-
value>
    <env-entry-type>java.lang.String</env-entry-type>
</env-entry>

```

If you run the KGSStore in FSDB mode (StorageType=3) and you use the containering feature, you have to configure a unique ContextName if you run more than one instance in one WEB-Server environment.

Sample:

WEB.XML

```

<servlet-mapping>
    <servlet-name>ContentServer</servlet-name>
    <url-pattern>/ContentServer</url-pattern>
</servlet-mapping>
<env-entry>
    <env-entry-name>KGSStore-ContextName</env-entry-name>
    <env-entry-value>OMS_GX</env-entry-value>
    <env-entry-type>java.lang.String</env-entry-type>
</env-entry>

```

1.3.1 Configuration file (default: Storage-conf.txt)

The following parameters can be specified.

Parameter	Value	Description
[Common Settings]		
Debuglevel	0= output standardout off 1= output standardout on	
Log-File		Full name of the logfile
Log-Mode	1 = log errors 2 = log warnings 4 = log debug information. 8 = log performance information	The values can be combined. Example: Errors +Warnings -> Debuglevel = 3
StorageType	Filing mode 0 = native filesystem 1 = Centera 2 = NetApp 3 = filesystem with DB 4 = Centera with 5 = ICAS 6 = ICAS Filesystem 7 = ORACLE UCM 8 = SharePoint 9 = DELL DX 10 = DELL DX with DB	See Section 0 = [StorageFS] 1 = [EMC Centera] 2 = [NetApp] 3 = [StorageFSDB] 4 = [EMC Centera DB] 5 = [ICAS] 6 = [ICASFS] 7 = [OracleUCM] 8 = [SHAREPOINT] 9 = [DELL] 10 = [DELLDB]
EnableComponentRead	true/false	Permitting offset/length access to Component Recommendation > true
EnableComponentDelete	true/false	Permit deleting components
OpCode	Int	0 = disabled for configuration Netapp: 1 = create missing doc.info files

KeyExportPath		Path for files with Metadata information provided by SAP (Keyexport)
TempPath		Working directory
EnableCheckRetentionDate		Enable software retention check (if retention is enabled).
[StorageFS]		
ArchPath		Storagepath. Can be specified per ContentRepository by adding “_<ContRep>”. Example: ArchPath_T1=/usr/arc/T1 Multiple path configuration with adding #n to ArchPath (ArchivPath#1_T1=.....)
FreeDiscSpaceArchPath	Integer	Minimum amount of space that should be kept free in MB per drive (corresponding to Archpath). The same syntax like Archpath.
ReadOnly	List of ContentRepository name, comma separated	ContentRepository/ies that should be handled as read only. If set to true, all write requests will be rejected
EnableComponentMove	True/false	File move instead of Copy to ArchPath. TRUE increases performance if CS working directory and ArchPath are on the same hard disk
RetentionPeriod		Defines the amount of time (in months) from now where the deletion date should be set. Retention periods can be set per ContRep and per document mime time. Example (for ContRep “MX”): RetentionPeriod_MX=36 application/x-alf=1000 application/x-reo=5 image/tiff=6
ContRepInPath		Repository ID in document filing structure on/off Recommendation TRUE
HashAlg		Hash algorithm used for Hashkey. Empty means Hashmode OFF. This Parameter can also be set per ContRep. Example: HashAlg = HashAlg_T1=MD5 Supported algorithm: MD5,SHA1,SHA-256,SHA-384,SHA-512
HashCheck	True/false	Enable/Disable Hashkey check during document checkout (get). This Parameter can also be set per
		ContRep. Example: HashCheck=false HashCheck_T1=true
DataEncoding	int	0= no data encoding 1= KGS encoding This Parameter can also be set per ContRep. Example: DataEncoding = 0 DataEncoding_T1=1

DuplicatePath		Path for storing duplicate of the data (mirroring). The syntax is the same as parameter ArchPath regarding ContentRepository specific paths and multiple path configurations.
FreeDiscSpaceDuplicatePath		Minimum amount of space that should be kept free in MB per drive (corresponding to DuplicatePath). The same syntax like DuplicatePath.
MaxFileNameLength	int	Maximal length of filename. When this limit is exceeded the part of the component id in the filename is replaced by an fingerprint of the component ID and the original component ID is stored in the info file. Use this parameter only if your file system has a limit that not fits to the documents you want to archive. 0 = no limit (default)
[EMC Centera]		
ArchPath		Path for Filesystemindex for storing Centera Clip-IDs (one Clip-ID for each SAP document)
CenteraPoolAddress	Centera IP Adresse	<p>The pool address is a comma-separated string of IP addresses or DNS names of available Centera nodes</p> <p>This example specifies a connection string with multiple IP addresses, a best practice that protects against one or more nodes with the access role of a cluster being unavailable. 10.1.1.1,10.1.1.2,10.1.1.3,10.1.1.4 This example opens a pool using the specified PEA file. 10.62.69.153?c:\emc\rwe.pea</p> <p>(see Centera Documentation for details) You can define one pool address per Repository ID by using Key "CenteraPoolAddress_xx" (xx = Repository-ID)</p>
EmbeddedDataThreshold	The maximum data size, in bytes, for data to be embedded in the CDF instead of being stored as separate blobs.	Default 102400 Max. value 102400

CompClip-DescA_n-xx-yyyy	<p>Syntax: AttributeName,AttributValue</p> <p>Attribute namens with special functionality (see EMC SDK): RetentionPeriod -> in Month (will be converted to seconds for EMC Centera) must be set with this parameter. e.g. CompClip-DescA_1-O1 = RetentionPeriod,10</p>	<p>n= counter starting with 1 xx=SAP Repository ID yyyy= SAP Component-ID</p> <p>(If yyyy isn't specified, the attributes are valid for all Components)</p>
DocClip-DescA_n-xx	<p>Syntax: AttributeName,AttributValue</p> <p>Attribute names with special functionality (see EMC SDK)</p>	<p>n= counter starting with 1 xx=SAP Repository ID</p>
[EMC CENTERA DB]		
DB-URL	Char	<p>Connection URL for DB. This Parameter is optional. Sample for ORACLE: jdbc:oracle:thin:@169.254.25.100:1521:KGSSTORE</p>
DB-Driver	Char	JDBC driver name. if (DB-URL not set)
DB-Server	Char	IP address or DNS name database server. if (DB-URL not set)
DB-Port	Char	Port database listener. if (DB-URL not set)
DB-SID	Char	Database system id. if (DB-URL not set)
DB-USER	Char	Database username
DB-PASSWORD	Char	Database user password The password will be encrypted after first start
CenteraPoolAddress		see [EMC Centera]
EmbeddedDataThreshold		see [EMC Centera]
CompClip-DescA_n-xx-yyyy		see [EMC Centera]
Repositories	Char	<p>Repositories for which database tables may be created automatically (comma-separated.) Sample: T1,T2,T3</p>
IgnoreContRepID		List of comma-separated Repository-ID's. For this repository,
		the key CSREPID will be ignored for database accesses, so the Document-ID will be the unique key to the document.
EnableContainerStreaming	Char	List of comma-separated Repository-ID's. Enable streamed reading for the specified repositories when containerfiles has to be extracted for get or read request (only in case of container registering is used)
DB-TableNamePrefix_xx	Char	Prefix Table Document, Component xx (CRID) default Prefix ContentRepID

ChangeRepositoryIDs		Repository ID's to change, comma-separated. This parameter works only in combination with parameter IgnoreContRepID. If a document is archived with one of these ID's, the first access to this document with a different ContentRepID will overwrite the repository information in the document info file.
ReadOnly	List of ContentRepository name, comma separated	ContentRepository/ies that should be handled as read only. If set to true, all write requests will be rejected
[NetApp]		
ReadOnly	List of ContentRepository name, comma separated	ContentRepository/ies that should be handled as read only. If set to true, all write requests will be rejected
EnableComponentMove	true/false (Default: false)	File move instead of Copy to ArchPath. TRUE increases performance if the CS working directory and ArchPath are on the same hard disk
ContRepInPath	true/false (Default: true)	Repository ID in document filing structure on/off Recommendation TRUE
ArchPath		see [StorageFS]
FreeDiscSpaceArchPath		see [StorageFS]
LockFiles	true/false (Default: false)	If set to true, component file and corresponding info file will be set read only on the filer. A delete date will be calculated and added to the properties file of the component. (Locking is done by a combination of the OS commands "touch -a -t" and "chmod 440")
RetentionPeriod		Defines the amount of time (in months) from now where the deletion date should be set. Retention periods can be set per ContRep and per document mime

		time. Example (for ContRep "MX"): RetentionPeriod_MX=36 application/x-alf=1000 application/x-reo=5 image/tiff=6
ChangeRepositoryIDs		Repository ID's to change, comma-separated. This parameter works only in combination with ContRepInPath = false. If a document is archived with one of these ID's, the first access to this document with a different ContentRepID will overwrite the repository information in the document info file.
DuplicatePath		see section [StorageFS]
FreeDiscSpaceDuplicatePath		see section [StorageFS]
DataEncoding		see section [StorageFS]
MaxFileNameLength		see section [StorageFS]
[StorageFSDB]		

ArchPath		Storagepath. Can be specified per ContentRepository by adding “_<ContRep>”. Example: ArchPath_T1=/usr/arc/T1
ContainerCachePath		Cachepath for Containeroptin
ContainerMaxDocSizeMB	Int	Documents with a size more than this limit (in MB) will be stored as a single file (not in a Container)
ContainerMaxMB	Int	Sizelimit for a container
ContainerMaxFiles	Int	0 = Containermode disabled Can be specified per ContentRepository by adding “_<ContRep>”. Example: ContainerMaxFiles_T1=500
ContainerCacheMaxTime	Int	Maximum time in seconds after a container will be closed when no new archiving request arrives.
ContRepInPath	true/false	Repository ID in document filing structure Recommendation TRUE
EnableComponentMove	true/false	File move instead of Copy to ArchPath. TRUE increases performance if CS working directory and ArchPath are on the same hard disk
EnableFileDelete	true/false	If file delete is not enabled, the dataset in the database will be deleted by a delete request, but the corresponding component file remains in the filesystem
EnableFilesWithExtension	true/false	Datafilenames with fileextension (depending on MIMETYPE)
RetentionPeriod		Defines the amount of time (in months) from now where the deletion date should be set. Retention periods can be set per

		ContRep and per document mime time. Example (for ContRep “MX”): RetentionPeriod_MX=36 application/x-alf=1000 application/x-reo=5 image/tiff=6
FolderDepth	Int	FolderDepth (Default 2)
FolderMax	Int	Max entries per Node (Default 1000)
FolderMaxFiles	Int	Maximum number of files in a folder
FolderPrefix	Char	<yyyyMMdd> = Dateprefix in folderstructur. Example:\ArchPath\T1\20110825\000\0000\document.pdf Default: Empty
DB-URL	Char	Connection URL for DB. This Parameter is optional. Sample for ORACLE: jdbc:oracle:thin:@169.254.25.100:1521:KGSSTORE
DB-Driver	Char	JDBC driver name. if (DB-URL not set)
DB-Server	Char	IP address or DNS name database server. if (DB-URL not set)

DB-Port	Char	Port database listener. if (DB-URL not set)
DB-SID	Char	Database system id. if (DB-URL not set)
DB-USER	Char	Database username
DB-PASSWORD	Char	Database user password The password will be encrypted after first start
DB-TableNamePrefix_xx	Char	Prefix Table Document, Component xx (CRID) default Prefix ContentRepID
DisableFullPath	boolean	True = document reference in database is relative to parameter Arch-path. Otherwise the full path to the document will be stored.
Repositories	Char	Repositories for which database tables may be created automatically. (comma-separated) Sample: T1,T2,T3
LockFiles	True/false	Lock files at file system is retention activated
IgnoreContRepID		See section [EMC CENTERA DB]
ChangeRepositoryIDs		See section [EMC CENTERA DB]
[ICASFS]		
ReadOnly	List of ContentRepository name, comma separated	ContentRepository/ies that should be handled as read only. If set to true, all write requests will be rejected
EnableComponentMove	true/false (Default: false)	File move instead of copy to ArchPath. TRUE increases

		performance if CS working directory and ArchPath are on the same hard disk
ContRepInPath	true/false (Default: true)	Repository ID in document filing structure on/off Recommendation TRUE
ArchPath		Storagepath. Can be specified per ContentRepository by adding “_<ContRep>”. Example: ArchPath_T1=/usr/arc/T1
LockFiles	true/false (Default: false)	If set to true, component file and corresponding info file will be set to read only on the filer. A delete date will be calculated and added to the properties file of the component. (Locking is done by a combination of the OS commands “touch -a -t” and “chmod 440”)
RetentionPeriod		Defines the amount of time (in months) from now where the deletion date should be set. Retention periods can be set per ContRep and per document mime time. Example (for ContRep “MX”): RetentionPeriod_MX=36 application/x-alf=1000 application/x-reo=5 image/tiff=6

ChangeRepositoryIDs		Repository ID's to change, comma-separated. This parameter works only in combination with ContRepInPath = false. If a document is archived with one of these ID's, the first access to this document with a different ContentRepID will overwrite the repository information in the document info file.
WaitForOfflineAttr		Time in milliseconds waiting for offline attribut set by Icas. Only needed when Icas WriteCache is to slow.
DuplicatePath		see section [StorageFS]
FreeDiscSpaceDuplicatePath		see section [StorageFS]
DataEncoding		see section [StorageFS]
MaxFileNameLength		see section [StorageFS]
[OracleUCM]		
ConnectionURL	char	ConnectionURL to ICM Server
User	char	ICM Username
Password	char	ICM Userpassword
SecurityGroup	char	SecurityGroup setting for the SAP Components in Oracle. This Parameter can be set per ContRep. Example (for ContRep "T1"): SecurityGroup_T1=Secure

Profile	char	Profile setting for the SAP Components in Oracle. This Parameter can be set per ContRep. Example (for ContRep "T1"): Profile_T1=IMPAPP_1
Timezone	char	Timezone for custom date. Sample: Timezone=America/New_York
[SharePoint]		
ConnectionURL	char	Connection URL
User	char	SharePoint-User
Password	char	Password
Domane	char	Windows domain (optional)
[DELL]		
ProxyAddr	char	The SCSP proxy address
ProxyPort	Int	(only relevant if parameter ProxyAddr is not blank) Portnumber Proxylocator
ProxyRetryTimeout	Int	(only relevant if parameter ProxyAddr is not blank) The number of seconds that an address will live in the dead pool.
ClusterName	char	(only relevant if parameter ProxyAddr is not blank) The name of the cluster to query
Hosts	char	(only relevant if parameter ProxyAddr blank) CAStor hosts as IP addresses or host names separated by "," Sample: 129.1.2.29,129.1.2.30 ..
Port	Int	(only relevant if parameter ProxyAddr blank) Portnumber DX

MaxConnectionPoolSize	Int	Size of connection pool. Basically, the connectionPoolSize indicates how many simultaneous open connections should be allowed
MaxRetries	Int	Maximum number of times to retry a command on communication or server failure
ConnectionTimeout	Int	Idle timeout for a request in seconds.
PoolTimeout	Int	The amount of time in seconds an idle connection will be stored for reuse.
LocatorRetryTimeout	Int	The number of seconds after a node is found dead that it will be retried.
ClusterDomain	Char	Domainname Cluster
Username	Char	Username Domaine
Password	Char	Password
RetentionPeriod		Defines the amount of time (in month) where the deletion date should be set. Retention periods can be set per ContRep and per

		document mime time. Example (for ContRep "MX"): RetentionPeriod_MX=36 application/x-alf=1000 application/x-reo=5 image/tiff=6
[ILM-Common Settings]		
Debuglevel		see [Common Settings]
Log-File		see [Common Settings]
Log-Mode		see [Common Settings]
StorageType	Filing mode 0 = native filesystem 1 = Centera 2 = NetApp 3 = filesystem with DB 4 = Centera with DB 5 = ICAS 6 = ICAS Filesystem	See Section 0 = [ILM-StorageFS] 1 = [ILM-EMC Centera] not released (beta status) 2 = [ILM-NetApp] 3 = reserved for StorageFSDB 4 = [ILM-EMCDB] 5 = [ILM-ICAS] 6 = [ILM-ICASFS]
TempPath		see [Common Settings]
EnableCheckRetentionDate		see [Common Settings]
[ILM-StorageFS]		
ContRepInPath		Repository ID in document filing structure on/off Recommendation TRUE
ReadOnly	true/false	If set to true, all write, update, and delete requests will be rejected see [StorageFS]
ArchPath		see [StorageFS]
PurgePath		temporary path (used is EnableRMECollection=true)
EnableMove	true/false	File move instead of Copy to ArchPath. TRUE increases performance if CS working directory and ArchPath are on the same hard disk
EnableRMECollection	true/false	Allows removing entire collection in one request.

[ILM-EMC CENTERA]		
ContRepInPath		see [EMC Centera]
EmbeddedDataThreshold		see [EMC Centera]
ReadOnly		see [EMC Centera]
ArchPath		see [EMC Centera]
CenteraPoolAddress		see [EMC Centera]
[ILM-NETAPP]		
ContRepInPath		see [ILM-StorageFS]
ReadOnly		see [ILM-StorageFS]
ArchPath		see [ILM-StorageFS]
PurgePath		see [ILM-StorageFS]
EnableMove		see [ILM-StorageFS]
EnableRMEECollection		see [ILM-StorageFS]

[ILM-EMCDB]		
EmbeddedDataThreshold		see [EMC CENTERA DB]
CenteraPoolAddress		see [EMC CENTERA DB]
DB-Driver		see [EMC CENTERA DB]
DB-Vendor		see [EMC CENTERA DB]
DB-Server		see [EMC CENTERA DB]
DB-Port		see [EMC CENTERA DB]
DB-SID		see [EMC CENTERA DB]
DB-USER		see [EMC CENTERA DB]
DB-PASSWORD		see [EMC CENTERA DB]
Repositories		see [EMC CENTERA DB]
ReadOnly		see [EMC CENTERA DB]
EnableRMEECollection		see [ILM-StorageFS]
DB-TableNamePrefix		see [EMC CENTERA DB]

[ILM-ICASFS]		
ContRepInPath		see [ILM-StorageFS]
ReadOnly		see [ILM-StorageFS]
ArchPath		see [ILM-StorageFS]
PurgePath		see [ILM-StorageFS]
EnableMove		see [ILM-StorageFS]
EnableRMEECollection		see [ILM-StorageFS]

[MimeTypeFileExtensions]		In some case it is needed to add a fileextention to file before archiving (e.x. for Oracle). The fileextention is related to the mimetype of the component and the KGSStore aus a map of default values (e.x. application/pdf = .pdf ...). If these default map not fits to the requirement's it is possible to overwrite these map, The following example shows override the default for mimetype video/x-flv to the fileextention .XYZ instead of .flv
video/x-flv		.XYZ

Sample:

[Common Setings] Sto-
rageType = 1
; 0= FileSystem 1= Centera 2=NetApp
DebugLevel = 1
Log-File = D:\PROD\SYSOUT\StorageEMC.log KeyEx-
portPath = D:\KGS\DocBase\KEYEXPORT\ TempPath
= D:\KGS\DocBase\TMP\ EnableComponentRead =
true
Log-Mode = 7

[EMC Centera]
ArchPath = D:\KGS\DocBase\DOC_CACHE\ CompClip-DescA-E1-data = RetentionPeriod,0
CenteraPoolAddress = neo
DocClip-DescA-E1 = SystemName,SAP-E1
EmbeddedDataThreshold = 102400
CompClip-DescA-E1=prop-environment,Test
DocClip-DescA-E1=prop-environment,Test

CompClip-DescA-K1-data = RetentionPeriod,600
DocClip-DescA-K1 = SystemName,SAP-E1
EmbeddedDataThreshold = 102400
CompClip-DescA-K1=prop-environment,Test
DocClip-DescA-K1=prop-environment,Test

[EMC CENTERA DB]
DB-Driver = oracle.jdbc.driver.OracleDriver
DB-Vendor = oracle DB-Server = KGS-DB DB-Port = 1521
DB-SID = KGSSTORE
DB-USER = SYSTEM
DB-PASSWORD = °C4323F585A473E Repositories =O1,T1
CenteraPoolAddress=128.221.200.56?P:\Java_entw\external-Jrs\Centera_SDK\Onlineclus-
ter\emea1armtesting.pea
EmbeddedDataThreshold = 102400
EnableFileDelete = TRUE
CompClip-DescA_1-O1 = RetentionPeriod,10
CompClip-DescA_2-O1-note = RetentionPeriod,0
DB-TableNamePrefix_T1 = EMC

[StorageFS] EnableComponentMove = FALSE
ContRepInPath = TRUE
ArchPath = D:\KGS\DocBaseFS\DOC_CACHE\

[StorageFSDB]
EnableComponentMove = FALSE
ArchPath = \DocBase\
FolderDepth = 2
FolderMax = 1000
FolderMaxFiles = 1000
DB-Driver = oracle.jdbc.driver.OracleDriver
DB-Vendor = oracle DB-Server = KGS-DB DB-Port = 1521
DB-SID = KGSSTORE DB-USER = SYSTEM
DB-PASSWORD = °C4323F585A473E DB-TableNamePrefix_T1 = T
DB-TableNamePrefix_T3 = T
Repositories = T1,T2,T3

[NetApp]
ContRepInPath=false
LockFiles=true
Repositories=P1,P2,RO,MX
ArchPath=/data/kgs/dev/SCG/
ArchPath_P1=/data/kgs/dev/SCG/P1/
ArchPath_P2=/data/kgs/dev/SCG/P2/

ReadOnly=RO,MX
RetentionPeriod=13
RetentionPeriod_P2=1188
RetentionPeriod_MX=36|application/x-alf=1000|application/x-reo=5|image/tiff=6

[DocArea-Zolldokumente]
Attribute-1=SNUMBER,Supplier Number,N,10,0,0000000000
Attribute-2=SAPINVOICENO,SAP Invoice Number,C,30,2
Attribute-3=ORDERNO,Order Number,N,10,1
Attribute-4=SHIPPERNO,Shipper Number,N,10
Attribute-5=ATCNO,ATC Number,N,10
Attribute-6=TRACKINGNO,Delivery Tracking Number,C,30
Attribute-7=DOCTYPE,Document Type,C,30

[STORAGEUCM]
ConnectionURL = idc://192.168.47.11:4711
User = sap
Password = welcome1
Timezone = Europe/Berlin

[STORAGESHAREPOINT] Con-
nectionURL = http://KGS-SP User =
Administrator
Password = sample

[DELL]
ProxyAddr = 172.20.0.3
ProxyPort = 80
ProxyRetryTimeout = 10
MaxConnectionPoolSize = 1000
MaxRetries = 10
ConnectionTimeout = 10
PoolTimeout = 10
Port = 80
LocatorRetry = 10
Username = KGS
Password = sample
ContRepInPath = TRUE RetentionPeriod = 1
ClusterName = DX-KGS Clus-
terDomain = dx-kgs LocatorRe-
tryTimeout =10

2. Storage type

The SAP ArchiveLink model is based on a "Document/Component" structure. A document is like a container and can contain one or more components. A document can also theoretically contain 0 components.

2.1 File system

The KGSStore creates a directory tree for each document. The path has the following construction:

Archpath/ContentRep-ID(depends on paramter ContRepInPath)/Doc-ID(split in more parts)/last digits
Doc-ID

The Doc-ID muss have a minimum length of 12. If the Doc-ID is shorter then 12, leading zeros will be added

The document and component files start with not more than the 3 last digits of the document-ID

_Info -> File with document property information

_comp-ID.Data -> File with component data

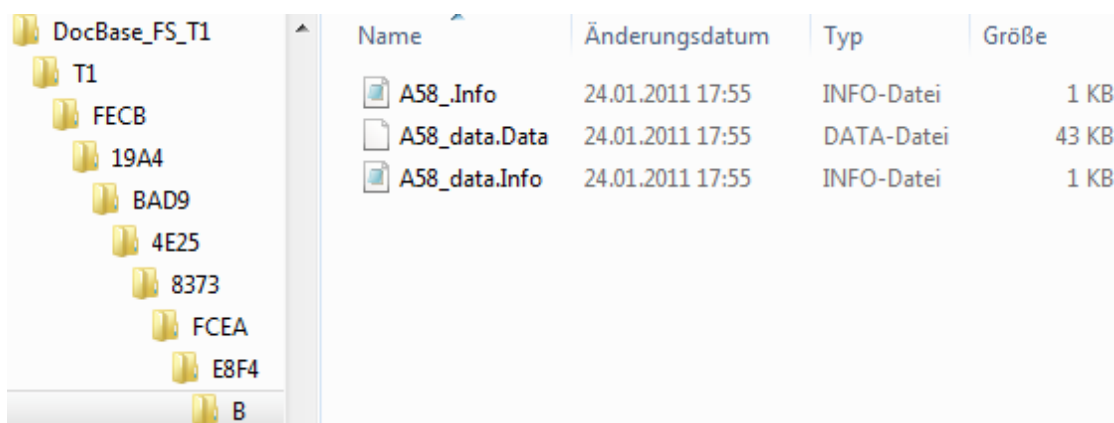
_comp-ID.Info -> File with component property information

Sample:

ContentRep-ID T1

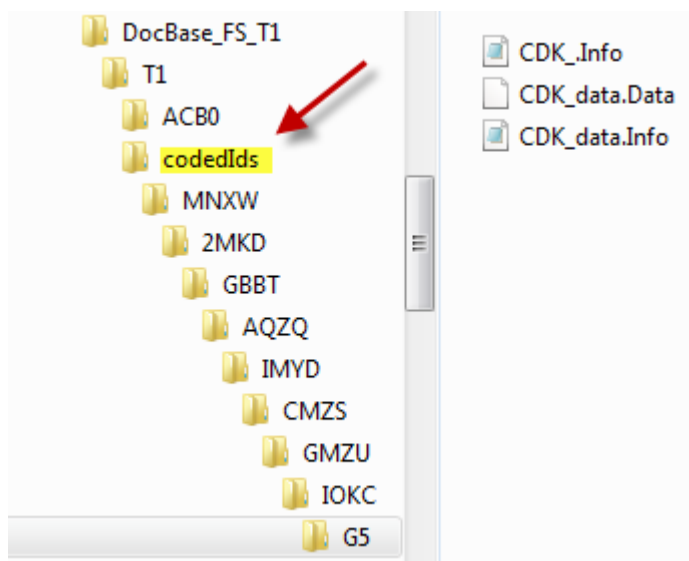
Doc-ID: 0F24D05D46A6CC478CB48EA4734AFE8

1 Component -> ID data



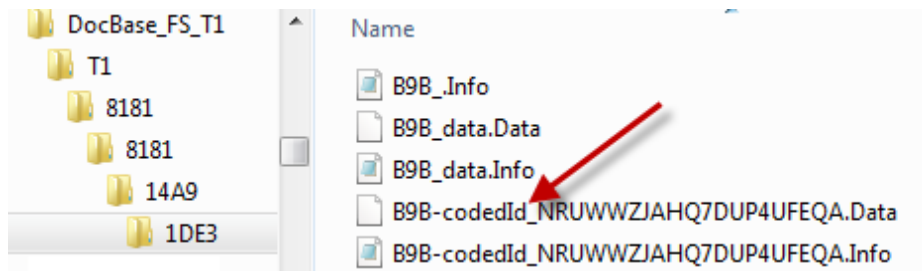
Name	Änderungsdatum	Typ	Größe
A58_Info	24.01.2011 17:55	INFO-Datei	1 KB
A58_data.Data	24.01.2011 17:55	DATA-Datei	43 KB
A58_data.Info	24.01.2011 17:55	INFO-Datei	1 KB

If a Document-Id contains characters, this may lead to a sub directory structure which is not allowed (names like COM1, LPT1 ... or containing not allowed characters like <>:?) the pathname will be Base32 encoded and you find them under the subfolder "codedIds". The Path has the same structure under this subdirectory as described above.

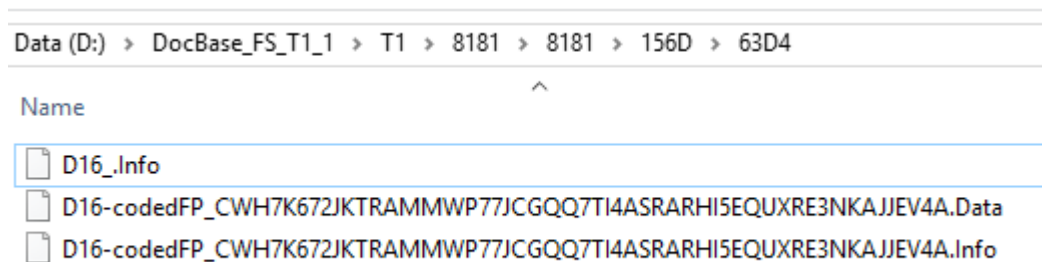


CDK_Info
CDK_data.Data
CDK_data.Info

If a component-ID contains characters which are not allowed for filenames (like V<>:?) the separator between the last characters of the Doc-ID is “-codedid”_ instead of ” _” and the component-ID is Base32 encoded.



If a component-ID leads to a filename which exceed the allowed filename length on your filesystem (see also parameter MaxFileNameLength), the separator between the last characters of the Doc-ID is “-codedFP”_ instead of ” _”. The component-ID is used to create a Hashvalue (FingerPrint) which will be Base32 encoded for having the shortest possible filename that is associated to the component-ID. The Component-ID is in this case stored in the component Info file.



The document property file has the following content:

Sample: FE8_.Info

```
#KGS Archive
#Fri Jan 14 14:34:22 CET 2011
ChangeTime=143422
ChangeDate=20110114
DocID=0F24D05D46A6CC478CB48EA4734AFE8
ArchiveID=T1
ALVersion=0045
ProfileVersion=V01.00
CreateTime=143422
CreateDate=20110114
Protection=rucd
```

ChangeTime	Last modification time
ChangeDate	Last modification date
DocID	Unique document ID
ArchiveID	Contentrepository ID
ALVersion	SAP ArchiveLink Version

ProfileVersion	Constant V01.00
CreateTime	Time when the entry was created
CreateDate	Date when the entry was created
Protection	SAP protection key (default
	rucd)
RetentionPeriod	optional, RetentionPeriode if not 0
DeletionDate	optional, Date when the document can be removed, depending on RetentionPeriod configuration during archiving process
Locked	optional, property set by application
ExpirationDate	optional, property set by application

The component property file has following content:

Sample: FE8_data.Info

```
#KGS Archive
#Fri Jan 14 14:34:22 CET 2011
Version= ChangeTime=143422
ChangeDate=20110114
Source=Invoice.tif
ALVersion=0045
ProfileVersion=V01.00
CreateTime=143422
CreateDate=20110114
CompType=image/tiff
Charset=
```

Version	Application Version
ChangeTime	Last modification time
ChangeDate	Last modification date
Source	Original file name (if known)
ALVersion	SAP ArchiveLink Version
ProfileVersion	Constant V01.00
CreateTime	Time when the entry was created
CreateDate	Date when the entry was created
CompType	Mimetype
Charset	Charset (if known)

Compression	Optional, compression string set by application
RetentionPeriod	optional, RetentionPeriode if not 0
DeletionDate	optional, Date when the document can be removed, depending on RetentionPeriod configuration during archiving process
HashAlg	optional, Hash algorithm
Hash	optional, Hash value datacontent
DataEncodingAlgo	Optional DataEncoding Algorithm 1=KGS
FPCompID	Optional, Component ID when the filename contains only the fingerprint of the component-ID

2.2 Centera

2.2.1 Without Database

For each SAP document, 1 Centera file (CLIP) exists with all the administration data of the document container. This “document CLIP” contains all references to the component CLIP’s.

2.2.1.1 Document-CLIP

2.2.1.1.1 Datafile

This CLIP has no tag with a BLOB (datafile). All CLIP-ID’s of the corresponding components are stored in the attributes tags.

2.2.1.1.2 CDF File

CLIP-Name = SAPAL Document

Clip	name=SAPAL Document		
Attribut-Name	Attribut-Value	Mandatory	Description
app-vendor	KGS Software GmbH		
app-name	SAP Link EMC Centera		
app-version	01.00		
app-profileversion	01.00	X	
Prop-type	Document	X	
Prop-archivid		X	SAP ContentRepID
Prop-docid		X	SAP DocID

Prop-alversion		X	ArchiveLink Version 0031/0045
Prop-protection			SAP Protection Flag
Prop-createtime		X	SAP creating time
Prop-createdate		X	SAP creating date
Prop-changetime		X	SAP modification time
Prop-changedate		X	SAP modification date
Prop-barcode			SAP barcode (for future use)
Tag	Name=compclipid		
Compid		X	SAP comp-ID
cid		X	CLIP ID Component

Sample:

```
<?xml version='1.0' encoding='UTF-8' standalone='no'?>
<ecml version="3.0">
<eclipdescription>
<meta name="type" value="Standard"/>
<meta name="name" value="SAPAL Document"/>
<meta name="creation.date" value="2005.03.23 12:38:10 GMT"/>
<meta name="modification.date" value="2005.03.23 12:39:00 GMT"/>
<meta name="creation.profile" value="anonymous"/>
<meta name="modification.profile" value="anonymous"/>
<meta name="numfiles" value="0"/>
<meta name="totalsize" value="0"/>
<meta name="refid" value="8B56JFU7VKDF1390BPB0S94CKL"/>
<meta name="prev.clip" value=""/>
<meta name="clip.naming.scheme" value="MD5"/>
<meta name="numtags" value="1"/>
<meta name="retention.period" value="0"/>
<custom-meta name="app-vendor" value="EMC (Powered by KGS)"/>
<custom-meta name="app-name" value="SAPALINK Centera"/>
<custom-meta name="app-version" value="01.00"/>
<custom-meta name="app-profileversion" value="01.00"/>
<custom-meta name="prop-type" value="document"/>
<custom-meta name="prop-archivid" value="T1"/>
<custom-meta name="prop-docid" value="27F31DBF78F34D4BB50C2816133EB434"/>
<custom-meta name="prop-alversion" value="0045"/>
<custom-meta name="prop-protection" value="rucd"/>
<custom-meta name="prop-createtime" value="133810"/>
<custom-meta name="prop-createdate" value="20050323"/>
<custom-meta name="prop-changetime" value="133810"/>
<custom-meta name="prop-changedate" value="20050323"/>
<meta name="sdk.version" value="2.3.327"/>
</eclipdescription>
<eclipcontents>
<compclipid cid="8BK1G3RHK69QBe1ES6EAS9PRGGB" compid="data"/>
</eclipcontents>
</ecml>
```

2.2.1.1.3 Component-CLIP

2.2.1.1.4 Datafile

The data e.g. TIFF/PDF etc. Files are saved as BLOB in the tag "compdata". If data filesize less than the size specified in parameter EmbeddedDataThreshold no separate BLOB is used for storing the data. Instead of an external BLOB file the document data is embedded in the CDF File. The Centera handles this internally.

2.2.1.1.5 CDF File

Clip	Name=SAPAL Component		
Attribut-Name	Attribut-Value	Mandatory	Description
app-vendor	KGS Software GmbH		
app-name	SAP Link EMC Centera		
app-version	01.00		
App-profileversion	01.00	X	
prop-type	component	X	
prop-archivid		X	SAP ContentRepID
prop-docid		X	SAP DocID
prop-compid		X	SAP ComponentID
prop-alversion		X	ArchiveLink Version 0031/0045
prop-createtime		X	SAP creating time
prop-createdate		X	SAP creating date
prop-changetime		X	SAP modification time
prop-changedate		X	SAP modification date
prop-appversion			SAP Application Version
prop-comptype			SAP Mimetype
prop-charset			SAP Charset
Tag	Name=compdata		
Filename		X	SAP FileName

Sample:

```
<?xml version='1.0' encoding='UTF-8' standalone='no'?>
<ecml version="3.0">
<eclipdescription>
<meta name="type" value="Standard"/>
<meta name="name" value="SAPAL Component"/>
<meta name="creation.date" value="2005.03.23 12:38:10 GMT"/>
<meta name="modification.date" value="2005.03.23 12:38:10 GMT"/>
<meta name="creation.profile" value="anonymous"/>
<meta name="modification.profile" value="anonymous"/>
<meta name="numfiles" value="1"/>
<meta name="totalsize" value="7716"/>
<meta name="refid" value="7CSR4L4SJ97N6D9GJV26UE3EN0"/>
<meta name="prev.clip" value=""/>
<meta name="clip.naming.scheme" value="MD5"/>
```

```

<meta name="numtags" value="1"/>
<custom-meta name="app-vendor" value="EMC (Powered by KGS)"/>
<custom-meta name="app-name" value="SAPALINK Centera"/>
<custom-meta name="app-version" value="01.00"/>
<custom-meta name="app-profileversion" value="01.00"/>
<custom-meta name="prop-type" value="component"/>
<custom-meta name="prop-archivid" value="T1"/>
<custom-meta name="prop-docid" value="27F31DBF78F34D4BB50C2816133EB434"/>
<custom-meta name="prop-compid" value="data"/>
<custom-meta name="prop-alversion" value="0045"/>
<custom-meta name="prop-createtime" value="133810"/>
<custom-meta name="prop-createdate" value="20050323"/>
<custom-meta name="prop-changetime" value="133810"/>
<custom-meta name="prop-changedate" value="20050323"/>
<custom-meta name="prop-appversion" value="Application V1.00"/>
<custom-meta name="prop-comptype" value="image/tiff"/>
<custom-meta name="prop-charset" value="Charset001"/>
<meta name="sdk.version" value="2.3.327"/>
</eclipdescription>
<eclipcontents>
<compdata filename="C:\Dokumente und Einstellungen\Grau\Eigene Dateien\S0000001.TIF">
<eclipblob md5="2SKF8I7TV30MJx55EI6UT27E7D0" size="7716" offset="0"/>
</compdata>
</eclipcontents>
</ecml>

```

2.2.2 With Database

All the document properties are stored in the database, together with Clip-Id of the componentdata stored at the centera

The table structure is the same as the file system with database (see file system with DB). The Clip-Id is stored with the Prefix CID= in field FILEN instead of the file name

2.2.3 Additional functionality

The KGS ContentServer supports an additional command in order to query Centera CLIP-ID's. The URL has the following structure:

<http://ipaddress:port/prgname?docPropertyGet&docid=xyz&propId=100>

2.3 ILM without Database

The file system structure is the same as the ILM file system. The ClipID is stored in a file at the position, as in file system mode the resource data is stored

```

#KGS Archive
#Fri Dec 07 11:35:39 CET 2012
CID\==7EQPA83VUTSNQe6ILEJRRFL851LG417DK80ITK0RFNVN21GSIT10P

```

2.4 ILM with Database

Tablename	ILMFS		
Field-Name	Field-Value	Type	Description

CSREPID (Index)		VARCHAR 40	SAP ContentRepID
URL (Index)		VARCHAR 512	URL
TYPE		VARCHAR 1	KZ Dataset 0=Collection 1=Resource
FILESIZE		NUMBER	
DELETED		CHAR 1	X= marked as deleted
RETDATE		DATETIME	Retention Date
LEGALHOLD		CHAR 1	X=Legal Hold activated
PROPERTIES		VARCHAR 0xFFFF	Properties String

2.5 NetApp

In this mode the system works equivalent to the mode Filesystem. In addition to this, NetApp specific features such as Retention periods, read only etc are being supported.

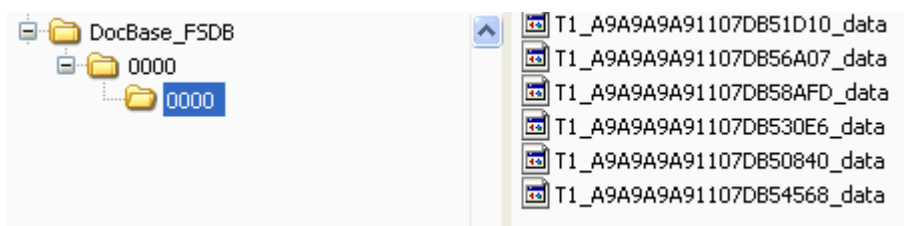
2.6 Filesystem with DB

The KGSStore creates a directory tree depending on parameter FolderDepth. In the lowest Subfolder the document data file is saved.

The data filename is built as follows:

ContentRepID_DocID_CompID

Sample:



2.6.1 Database

The KGSStore uses 3 tables for storing all the needed component and document information:

Table Document

Tablename	DOCUMENT		
Field-Name	Field-Value	Type	Description
CSREPID (Index)		VARCHAR 40	SAP ContentRepID
DOCID (Index)		VARCHAR 40	SAP DocID

ALVERS	4500	VARCHAR 4	ArchiveLink Version 0031/0045
PROTECTION		VARCHAR 4	SAP Protection Flag
CREDATETIME		DATE	SAP creating timestamp
MODDATETIME		DATE	SAP modification timestamp
RETDATE		CHAR 8	Retention Date

BARCODE		CHAR 40	SAP barcode (for future use)
---------	--	---------	------------------------------

Table Components

Tablename	COMPONENT		
Field-Name	Field-Value	Type	Description
CSREPID (Index)		VARCHAR 40	SAP ContentRepID
DOCID (Index)		VARCHAR 40	SAP DocID
COMPID (Index)		VARCHAR 512	SAP DocID
ALVERS	4500	VARCHAR 4	ArchiveLink Version 0031/0045
CREDATETIME		DATE	SAP creating timestamp
MODDATETIME		DATE	SAP modification timestamp
RETDATE		DATE	Retentiondate
APPVERS		VARCHAR 80	SAP Application Version
COMPTYPE		VARCHAR 80	SAP Mimetype
CHARSET		VARCHAR 80	SAP Charset
FILESIZE		NUMBER	
FILEN		VARCHAR 512	Filename in FileSystem (if CONTAINERFILE not empty, Filename of a ZIP Container)
ORGFILN		VARCHAR 512	Org. Filename
CONTAINERFILE		VARCHAR 255	Filename in Container (if containering is enable)
HASHALG		VARCHAR 10	Hash algorithm
HASHKEY		VARCHAR 128	Hashkey
HASHALGCONTFILE		VARCHAR 10	Hash algorithm Containerfile
HASHKEYCONTFILE		VARCHAR 128	Hashkey Containerfile

Table Metadaten

Tablename	DOCUMENT_KEY S		
Field-Name	Field-Value	Type	Description
NAME (Index)		VARCHAR 40	Keyname
VALUE (Index)		VARCHAR 255	Keyvalue
CSREPID (Index)		VARCHAR 40	SAP ContentRepID
DOCID (Index)		VARCHAR 40	SAP DocID

2.7 HPICas

2.7.1 ArchiveLink

ComponentProperty String

V = ArchiveLink version
 T = Creation timestamp
 C = Modification timestamp
 A = SAP application version
 M = Mimetype
 S = Characterset
 F = Filename
 L = Filesize
 R = Retention Date

||V=4500|T=20090825123517|C=20090825123519|A=Application
 Version|M=image/tiff|S=Characterset|L=12345|F=Org Filename| Docu-

mentProperty String

A = ContentRepID
 D = Document ID
 V = ArchiveLink Version
 P = Protection Key
 T = Creation timestamp
 C = Modification timestamp
 R = Retention Date
 B = Barcode
 E = Expiration date
 L = Locked flag

2.7.2 ILM

Directory Entry

X = Type 0=Directory
 T = Creation timestamp
 R = Retention Date

|T=0|

Directories are saved with a description string ("propertydata")

The properties are saved as a component with the CompID „prop_“.

File Entry

Files are saved as components of the properties.

The data is saved with a CompID, respectively the prefix data_filename, the attributes with prefix desc_..., and the properties with prefix prop_...

X = Type 1=File

T = Creation timestamp
 L = Filesize
 R = Retention Date

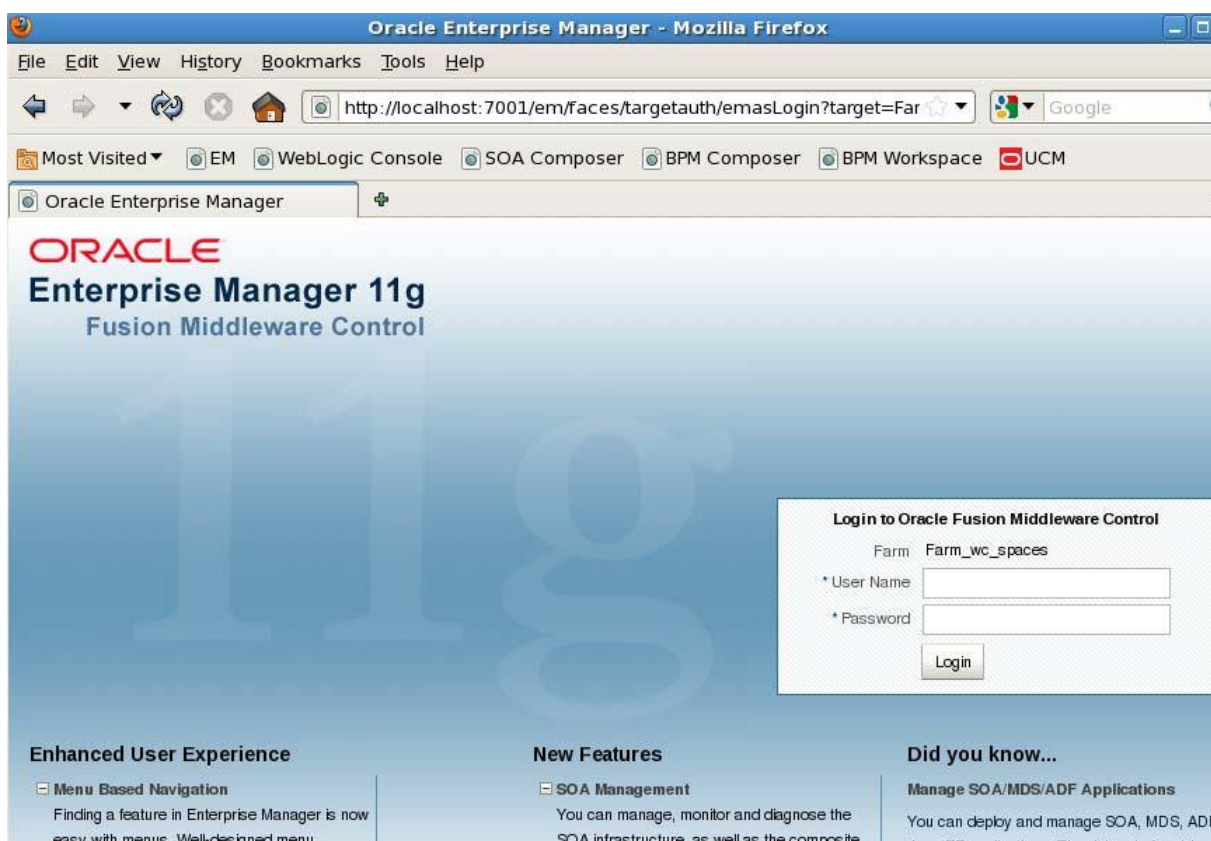
2.8 Oracle UCM

2.8.1 Install Oracle API

Install Oracle-ridc-client (Oracle® Fusion Middleware) in the Tomcat environment. The KGS Store will load this client API to access Oracle.

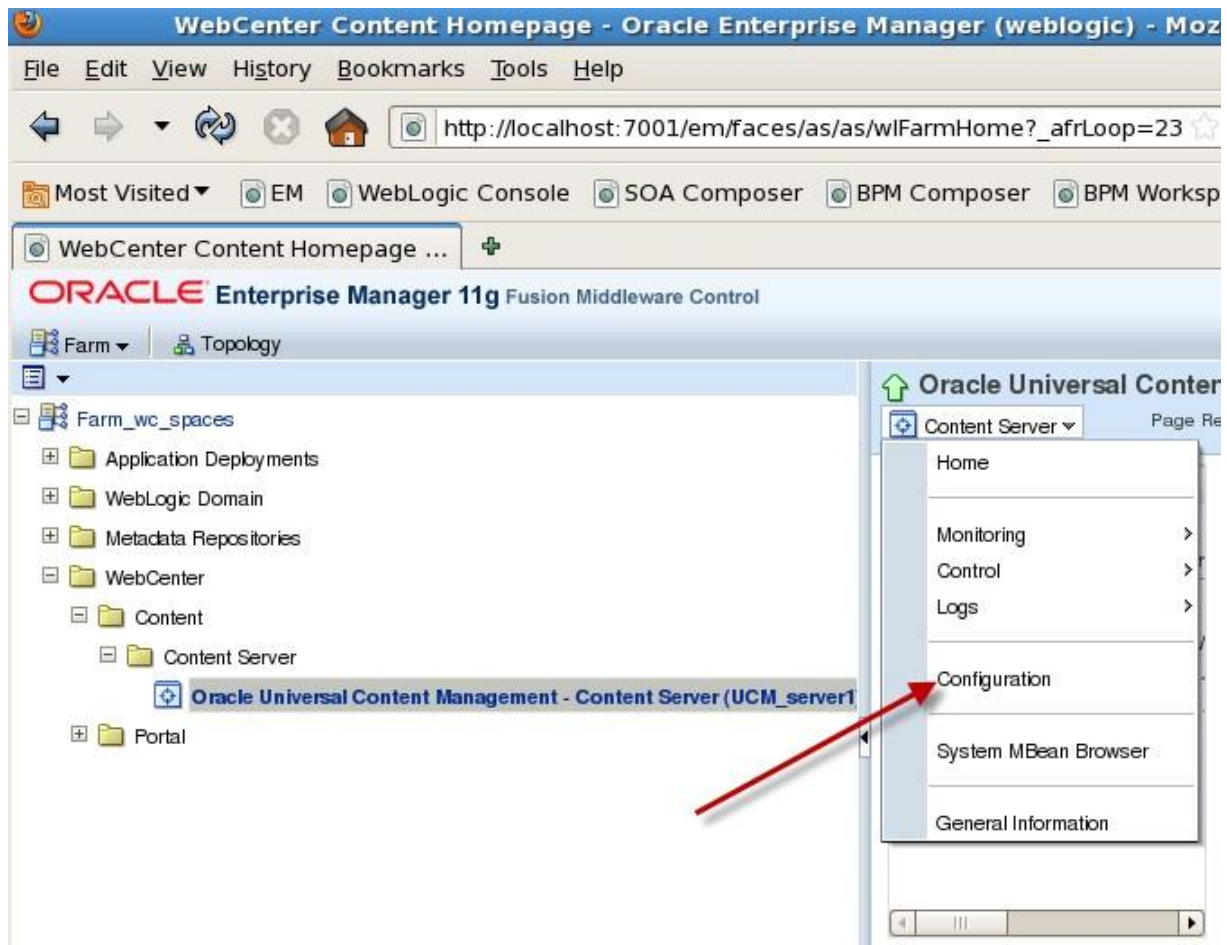
2.8.2 Enable IDC Service for 11g

Browse to your Enterprise Manager. On a default domain this is on <http://localhost:7001/em>

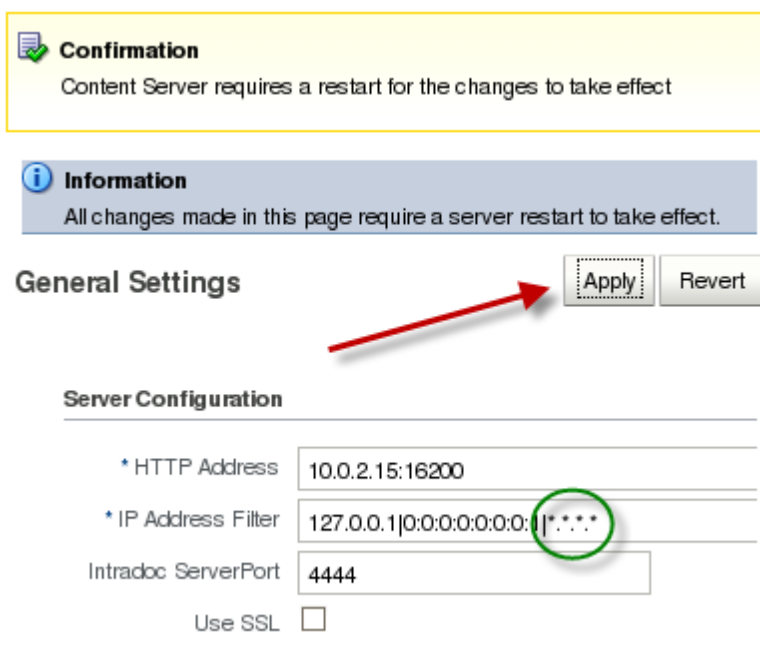


Login, default weblogic/welcome1

Open the Content Management node and select Configuration from the UCM menu as shown in following image:

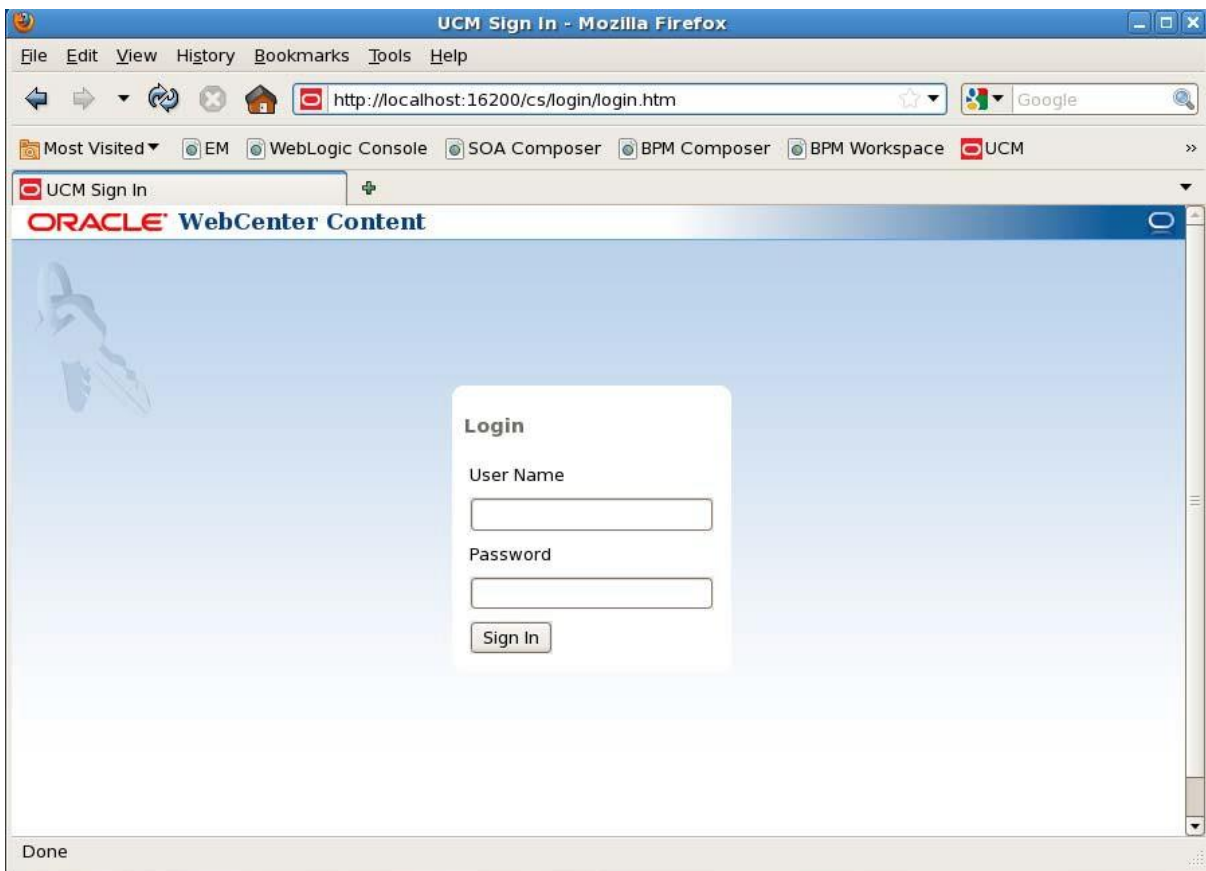


The IP Address Filter is a very important parameter. With this filter, you can grant specific IP addresses to connect to UCM. If an IP is not listed, it will not be able to create a socket connection to the server. You can also use wildcards as shown in the image

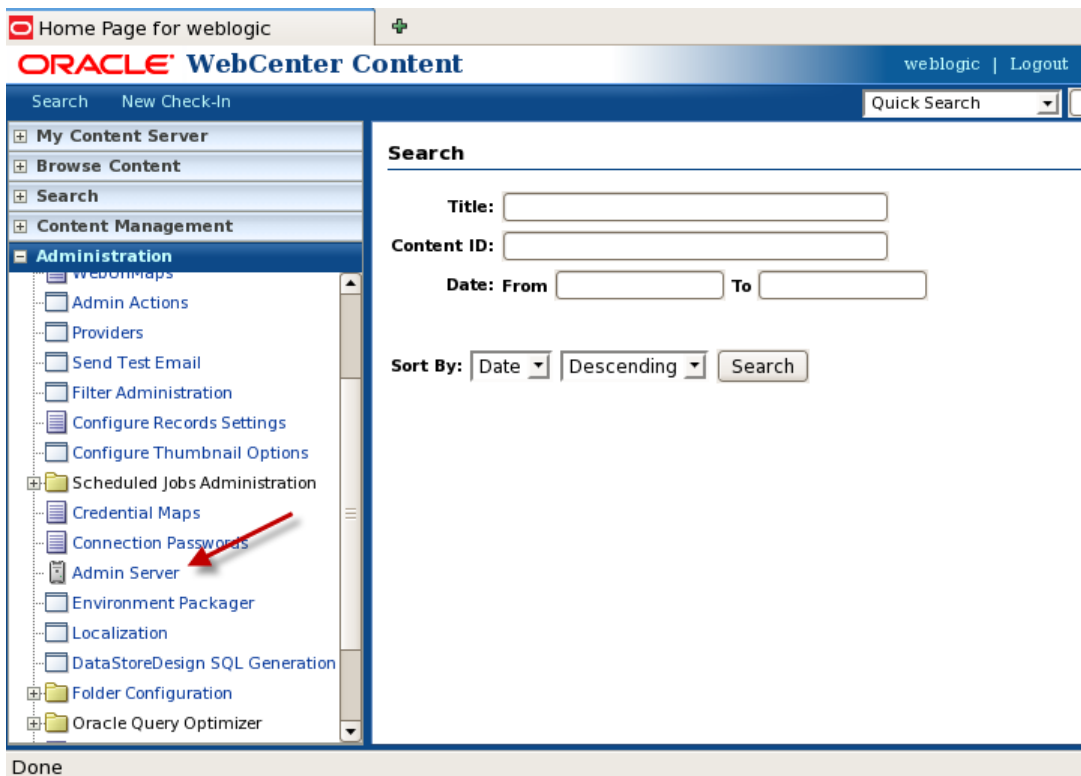


Restart the Server.

2.8.3 Enable DBSearchContainsOpSupport



Login, default weblogic/welcome1



Check Option DBSearchContainsOpSupport



Scroll down and push button update

SiebelSearchExtraParams

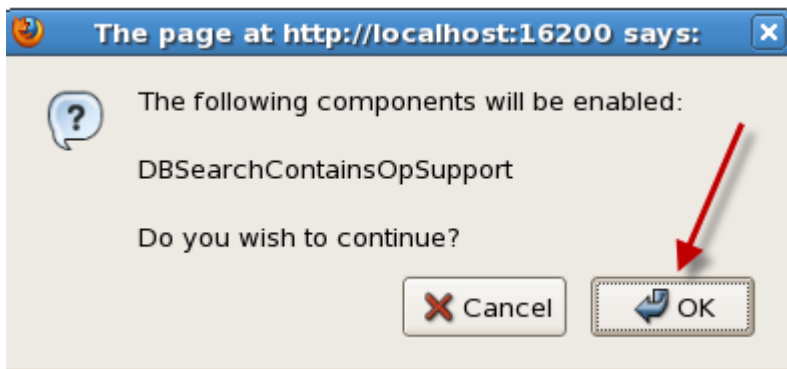
[OPTIONAL] This component is an optional part of the Siebel Adapter for Enterprise Content Management. It enables the passing of additional Siebel metadata values to the Content Server Siebel Adapter components. If enabled the configured extra Siebel parameters are added as metadata settings on the New or Scan attachment forms.

WebCenterConfigure

The WebCenterConfigure component is used to configure the content server for WebCenter by setting necessary configuration parameters and enabling WebCenter required components.



Confirm with Button "ok"



ORACLE WebCenter Content Admin Server

Options for 10021516200

[Server Status](#)

» [Component Manager](#)

[General Configuration](#)

[Content Security](#)

[Internet Configuration](#)

[View Admin Output](#)

[View Server Logs](#)

[View Providers](#)

[System Audit Information](#)

This server must be restarted before the changes will take place.

Component Manager

Use this page to enable or disable standard server changes to take effect. For more fine-grained control, see the [component manager](#). If you are using Universal Records Manager, which URM components are enabled and disabled.

- All Features**
 Document I
 Folders
 Inbound Re

Document Management

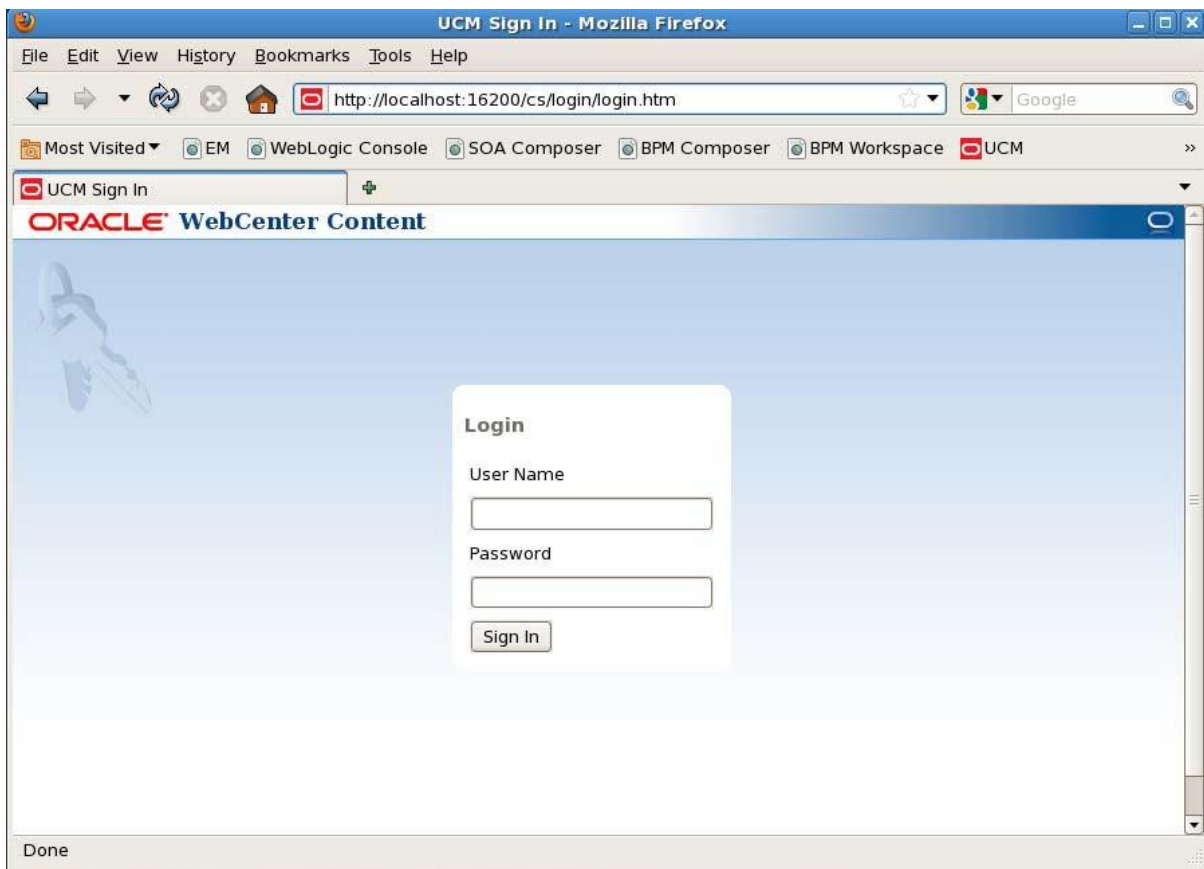
ContentCategorizer

Content Categorizer component suggests metadata to the Content Server and can be used to recategorize Content Server. The metadata values are determined by the system administrator.

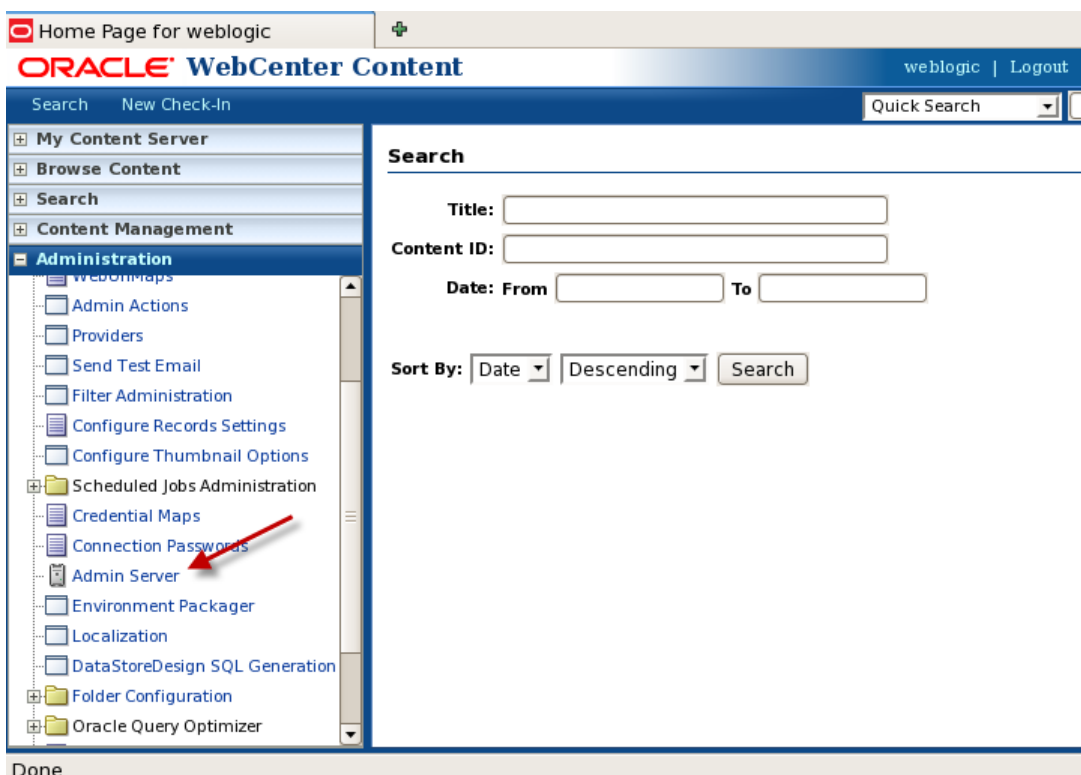
Restart the server

2.8.4 Install KGS Service

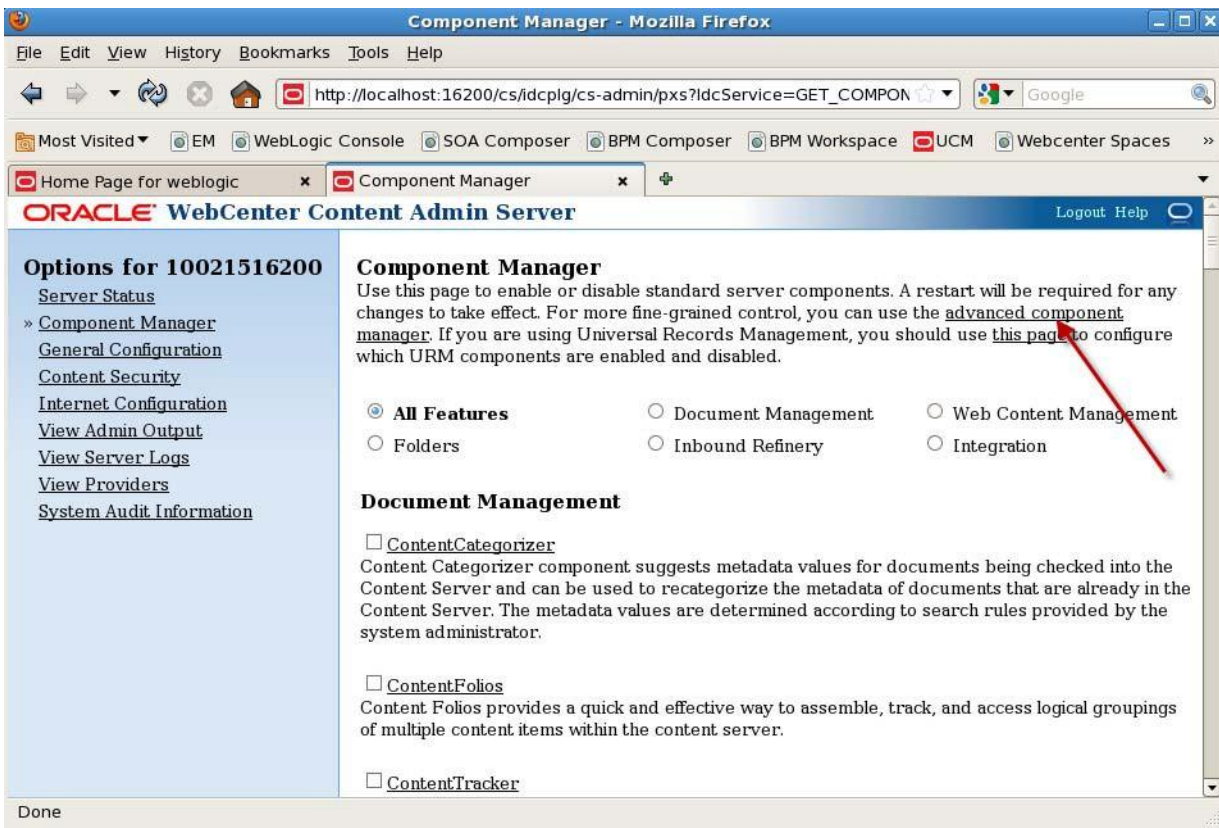
<http://localhost:16200/cs/login/login.htm>



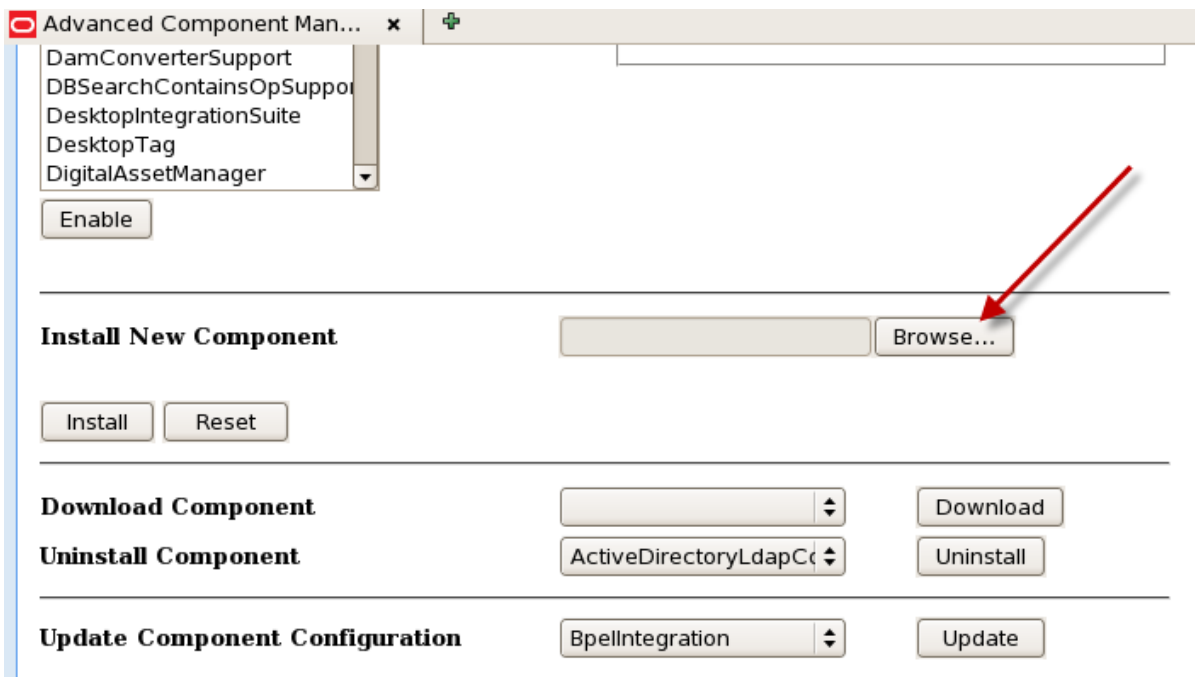
Login, default weblogic/welcome1



Click advanced component manager to view the Advanced Component Manager Page.



Click the Browse button next to the Install New Component field.

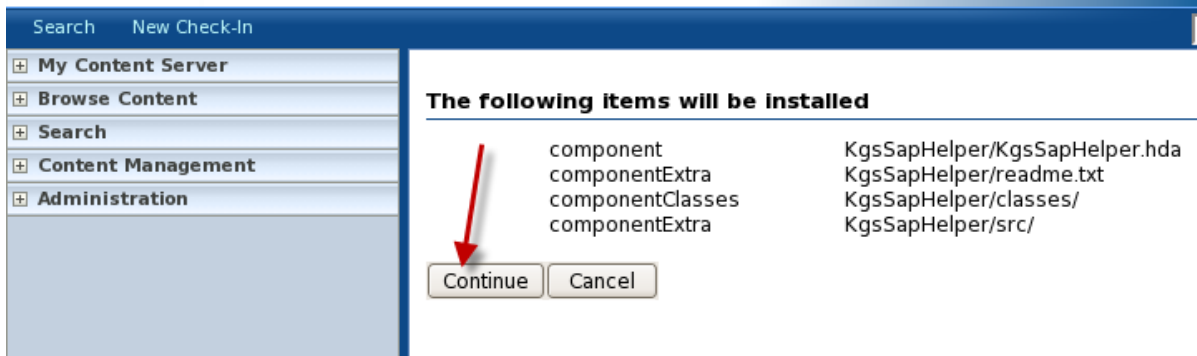


Select the KgsSapHelper.zip file and push Button Install

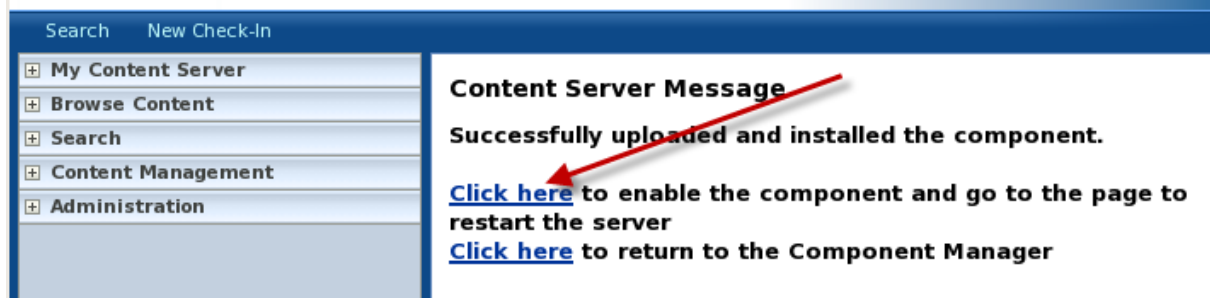


Push Button Continue

ORACLE WebCenter Content



ORACLE WebCenter Content



ORACLE WebCenter Content Admin Server

Options for 10021516200

- » [Server Status](#)
- [Component Manager](#)
- [General Configuration](#)
- [Content Security](#)
- [Internet Configuration](#)
- [View Admin Output](#)
- [View Server Logs](#)
- [View Providers](#)
- [System Audit Information](#)

This server must be restarted before the changes will take place.

Content Server

Current Status: **Running**
 To restart the UCM server, the containing managed server process needs to be restarted.
 Common Links: [Home Page](#) [Administration](#)

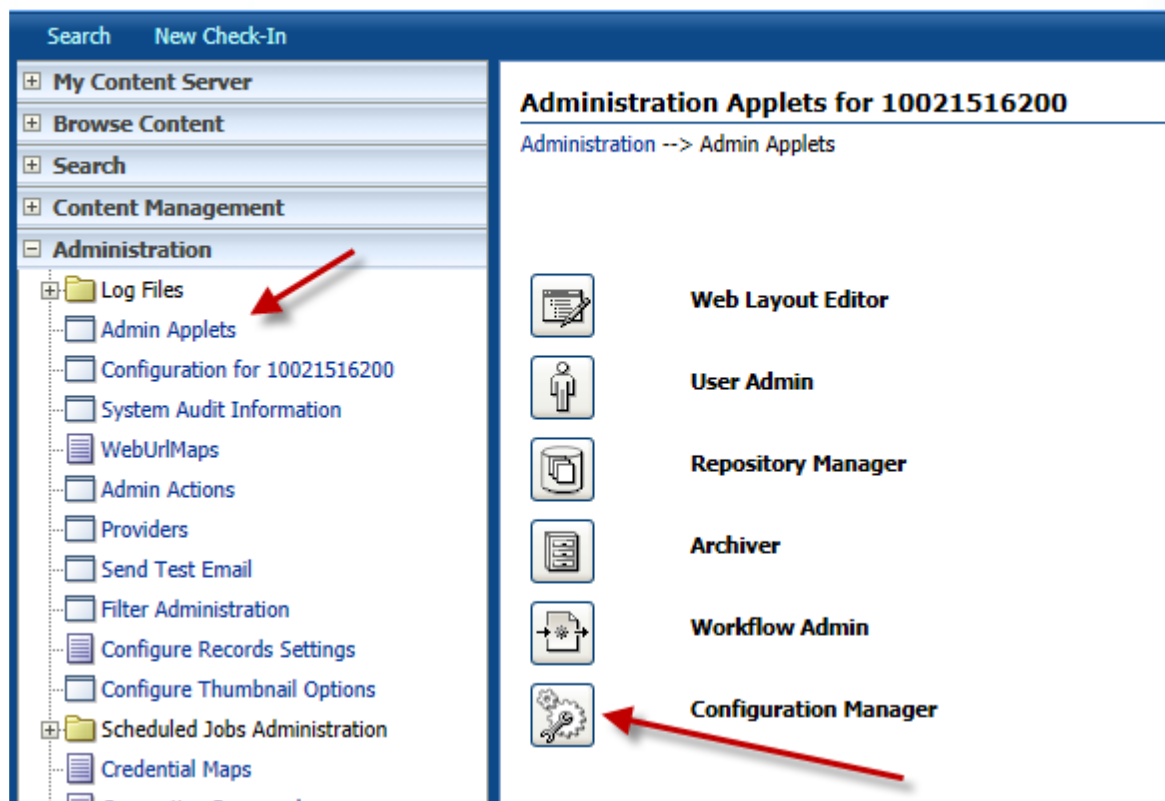
Restart Server

2.8.5 Create Oracle ArchiveLink Keys

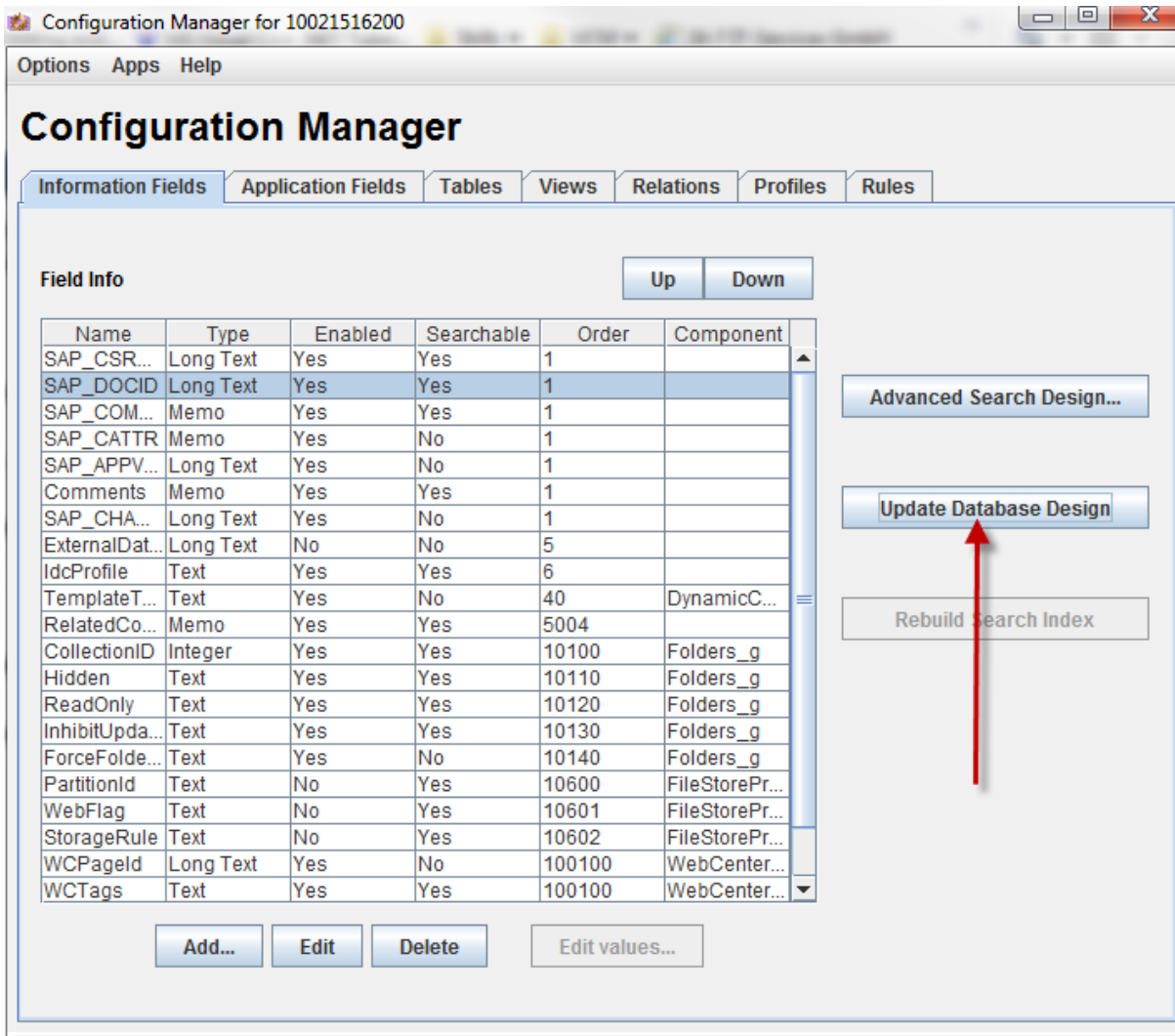
Start KGS ContentServer and following keys will be created

Goto Configuration Manager and push button "Update Database Design"

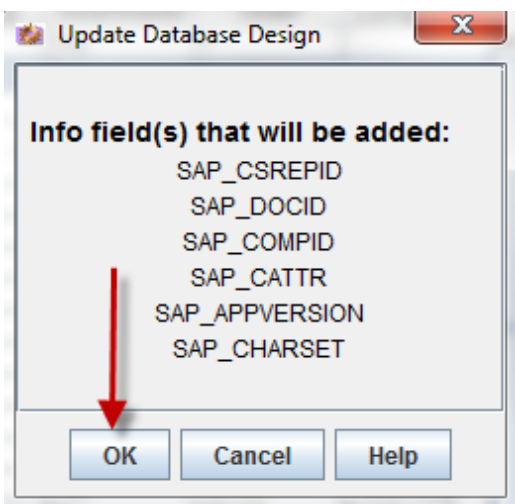
ORACLE WebCenter Content



The screenshot shows the Oracle WebCenter Content Administration interface. On the left, a navigation tree is visible with the following items: My Content Server, Browse Content, Search, Content Management, and Administration. Under Administration, the following items are listed: Log Files, Admin Applets (highlighted with a red arrow), Configuration for 10021516200, System Audit Information, WebUrlMaps, Admin Actions, Providers, Send Test Email, Filter Administration, Configure Records Settings, Configure Thumbnail Options, Scheduled Jobs Administration, and Credential Maps. The main content area is titled 'Administration Applets for 10021516200' and shows a list of applets: Web Layout Editor, User Admin, Repository Manager, Archiver, Workflow Admin, and Configuration Manager. A red arrow points to the Configuration Manager applet icon.



Confirm with button "ok"



Do Zone Field Configuration:

ORACLE WebCenter Content

Search New Check-In

- My Content Server
- Browse Content
- Search
- Content Management
- Administration**
 - Log Files
 - Admin Applets
 - Configuration for 10021516200
 - System Audit Information
 - WebUrlMaps
 - Admin Actions
 - Providers
 - Send Test Email
 - Filter Administration
 - Configure Records Settings
 - Configure Thumbnail Options
 - Scheduled Jobs Administration
 - Credential Maps
 - Connection Passwords
 - Admin Server
 - Environment Packager
 - Localization
 - DataStoreDesign SQL Generation
 - Folder Configuration
 - Zone Fields Configuration
 - Oracle Query Optimizer


Search

Title:

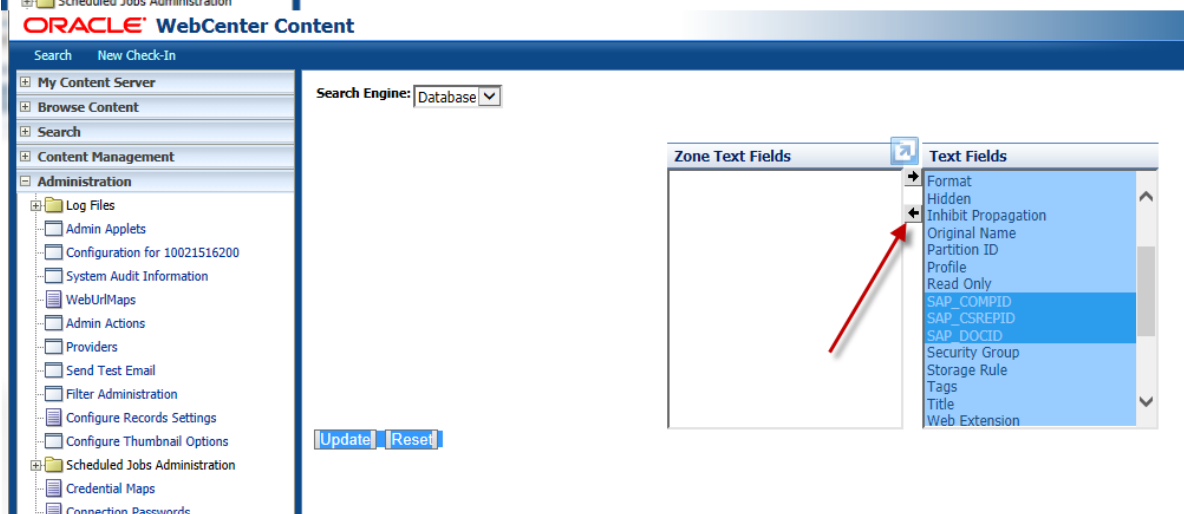
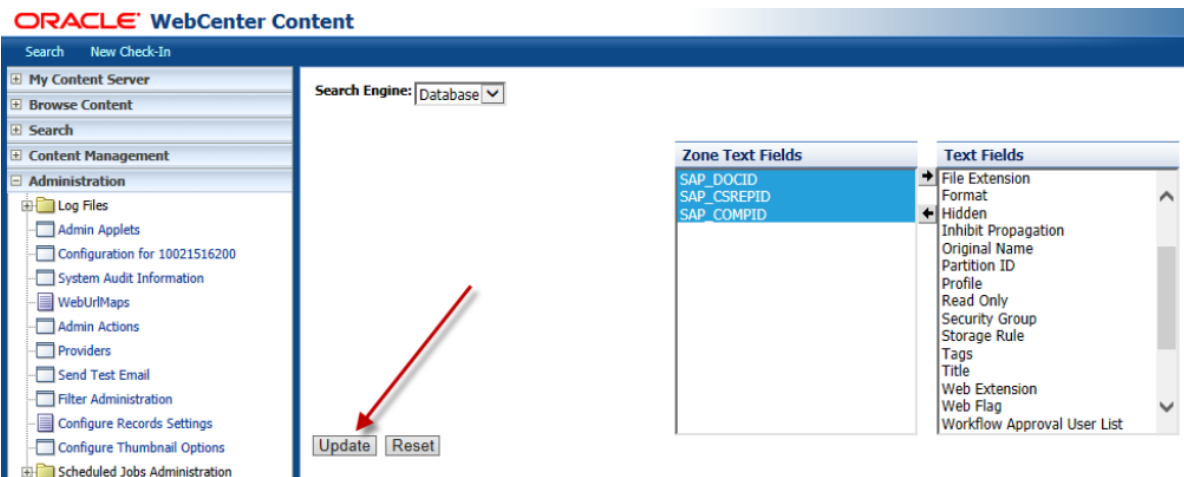
Content ID:

Date: From To

Sort By:



Move fields SAP_COMPID, SAP_CSREPID and SAP_DOCID to Column "Zone Text Fields"



2.8.5.1 Oracle ArchiveLink Key Description

Following “base” keys are used in Oracle to handle the SAP required metadata

- xSAP_CSREPID = Contentrepository-ID
- xSAP_DOCID = SAP Document ID
- xSAP_COMPID = SAP Component ID
- xSAP_APPVERSION = Application Version
- xSAP_CHARSET = Characterset Information
- xSAP_CATTR = Attributes of the Component
- xSAP_DATTR = Attributes of the Document

The fields SAP_CATTR and SAP_DATTR containing a key/value pair that holds certain document and component attributes. Each key/value pair is separated by character ‘#’ and the key identifier and the value is separated by character ‘^’.

For field SAP_DATTR following key identifier are possible:

- V = ArchiveLink Version
- P = Protection Key
- T = Creation timestamp
- M = Modification timestamp
- R = Retention Date
- B = Barcode

E = Expiration date
 L = Locked flag

Sample:

#V^0045#P^rcud#T^20140616223830#M^20140616223830#R^#B^#

For field SAP_CATTR following key identifier are possible: ComponentProperty String

T = Creation timestamp
 M = Modification timestamp
 V = ArchiveLink version
 X = Mimetype
 R = Retention Date

Sample:

#T^20140616223830#M^20140616223830#V^0045#X^application/pdf#R^#

This a screenshot of a SAP Document with the basic metadata information.

Content Information

		Content Actions
Content ID:	10021516200000639	
Revision:	1	
Type:	SAP Component	
Title:	T1_C10254AA2D87C745A2C1F37F9D9C5A37_data	
Author:	weblogic	
SAP_CSREPID:	T1	
SAP_DATTR:	#V^0045#P^rcud#T^20140616223830#M^20140616223830#R^#B^#	
SAP_COMPID:	data	
SAP_CATTR:	#T^20140616223830#M^20140616223830#V^0045#X^application/pdf#R^#	
SAP_APPVERSION:		
SAP_CHARSET:		
SAP_DOCID:	C10254AA2D87C745A2C1F37F9D9C5A37	
Comments:		
Profile:		
Template Type:		
wwxRelatedContentList:		
Folder:		
Hidden:	False	
Read Only:	False	
Inhibit Propagation:	False	
Force Folder Security:	False	
Page ID:		
Tags:		
Workflow Assignment:		
Workflow Approval User List:		
Security Group:	Public	
Account:		
Checked Out By:		
Status:	Released	
Formats:	application/pdf	

2.9 DELL DX

2.9.1 2.9.1 Documents

To have the information on the DX, which components belongs to document, a file is written to hold the component-ID information. This file is written as a named object. The object name is the Document-ID with a prefix "KGS_FILE_". The ContentRepID is the bucketname.

Sample:

ContentRepository: T1
Document-ID: 87D2D31C2CF33344A68CA232D88AB221
Component-ID: data

Objectname: T1/KGS_FILE_87D2D31C2CF33344A68CA232D88AB221

Sample of such a file:

```
;all Component-IDs  
[COMPONENTS] ID-  
data = data  
ID-descr = descr
```

DX Metadata:

```
x-KGS-meta-Protection: rcud  
x-KGS-meta-CTime: 20120827190807  
x-KGS-meta-DocumentID: 87D2D31C2CF33344A68CA232D88AB221  
x-KGS-meta-ALVersion: 0045  
x-KGS-meta-Type: D  
x-KGS-meta-ContentRepID: T1  
x-KGS-meta-MTime: 20120827190807  
x-KGS-meta-MTime: 20120827190807  
x-KGS-meta-Barcode:  
x-Dell-originator-version-meta: 03;38;0  
x-Dell-creator-version-meta: 03;38;0  
x-Dell-creator-meta: KGSStore KGS ContentServer4DELL  
x-KGS-meta-AppVersion:  
Content-Disposition: inline;filename="87D2D31C2CF33344A68CA232D88AB221.ini" Content-  
Type: text/plain
```

2.9.2 Components

All components will be archived as named objects. The object name has a prefix "KGS_FILE" and contains the Document-ID and Component-ID, separated by "_". The ContentRepID is the bucketname.

Sample:

ContentRepository: T1
Document-ID: 87D2D31C2CF33344A68CA232D88AB221
Component-ID: data

Objectname: T1/KGS_FILE_87D2D31C2CF33344A68CA232D88AB221_data

DX Metadata:

x-KGS-meta-ContentReplID: T1
x-KGS-meta-DocumentID: 87D2D31C2CF33344A68CA232D88AB221
x-KGS-meta-ComponentID: data
x-KGS-meta-ALVersion: 0045
x-KGS-meta-FileName: Tempfile9080873779758346688.alf
x-KGS-meta-CTime: 20120827190807
x-KGS-meta-MTime: 20120827190807
x-KGS-meta-Type: C
x-KGS-meta-Charset:
x-Dell-originator-version-meta: 03;38;0
x-Dell-creator-version-meta: 03;38;0
x-Dell-creator-meta: KGSStore KGS ContentServer4DELL
x-KGS-meta-AppVersion:
Content-Disposition: inline;filename="Tempfile9080873779758346688.alf" Content-
Type: application/x-alf

3. Add-on functionality

3.1 Requesting a Centera CLIP-ID for a given Document

The KGS ContentServer provides an additional http command in order to request a Centera Clip ID of an ArchiveLink document. The http URL has the following syntax:
<http://ipaddress:port/prgname?docPropertyGet&docid=xyz&propId=100>